

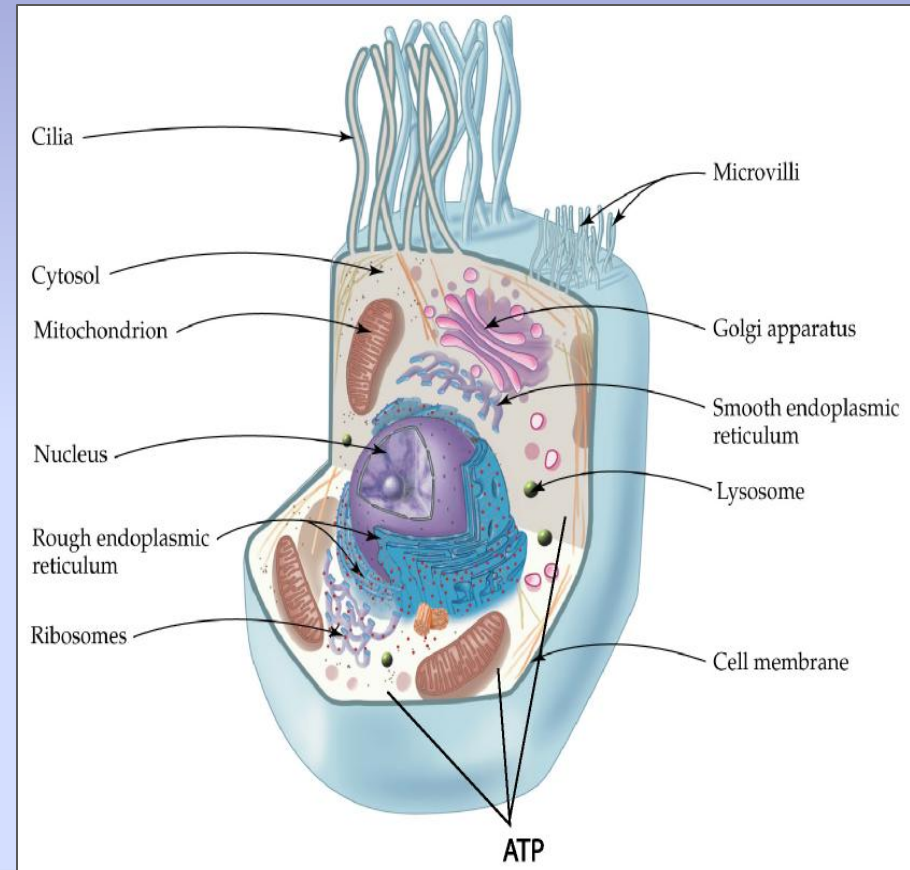
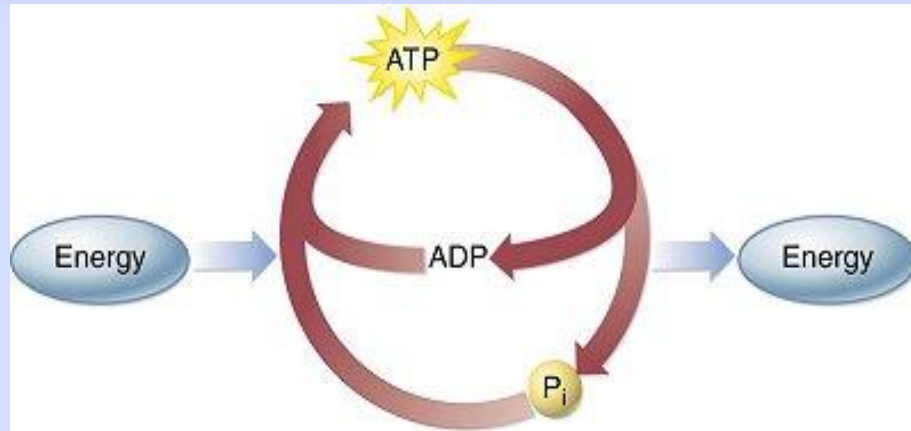
Environmental Monitoring with ATP Technology
Quip Laboratories, Inc.



Adenosine Triphosphate (ATP)

Chemical Energy

- Energy source for all living cell functions.
- Responsible for cellular reproduction, metabolism and motility.
- Continuously recycled as long as the cell is alive.



ATP is a cellular molecule found in all living cells; including bacteria, blood, tissue, and mold...

**ATP IS AN INDICATOR OF
MICROORGANISMS AND THE FOOD
(ENERGY) THAT THEY'RE LIVING OFF OF!**



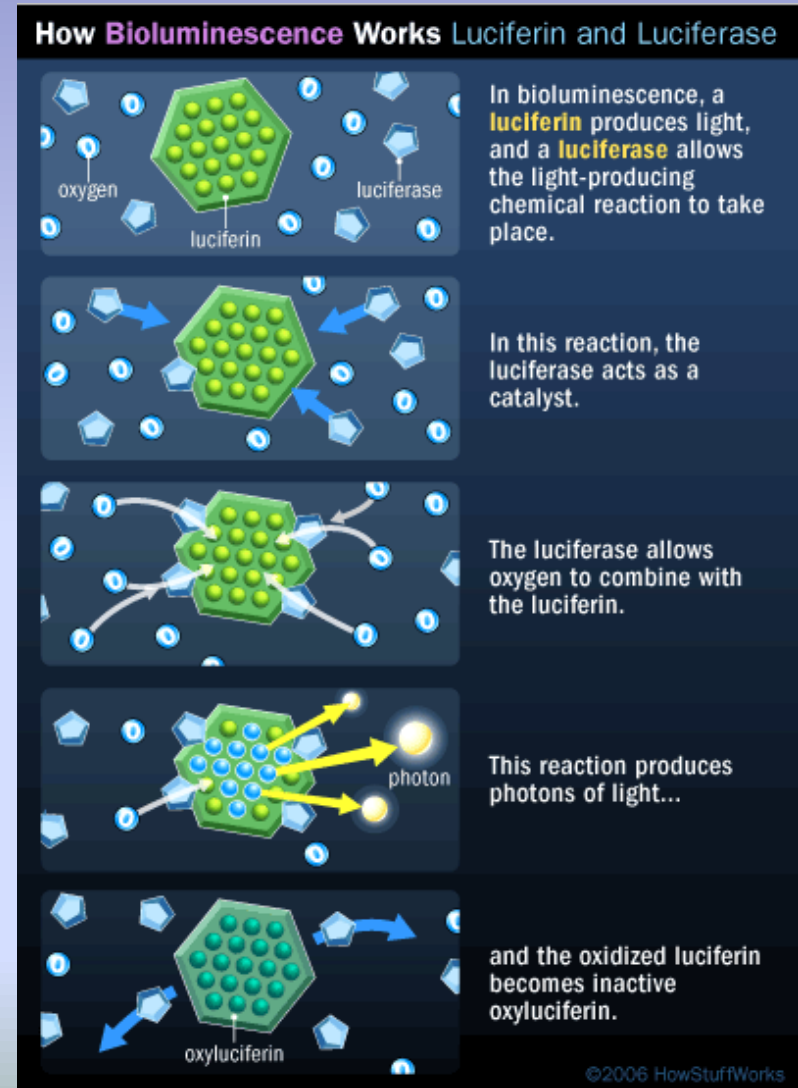
AccuPoint 2 ATP Sanitation Luminometer

- ✓ Lightweight, sturdy, bigger screen.
- ✓ State of the art photo-diode system.
- ✓ Intuitive interface with test plan .
- ✓ Easy to use data manager software program.



The Accupoint test!

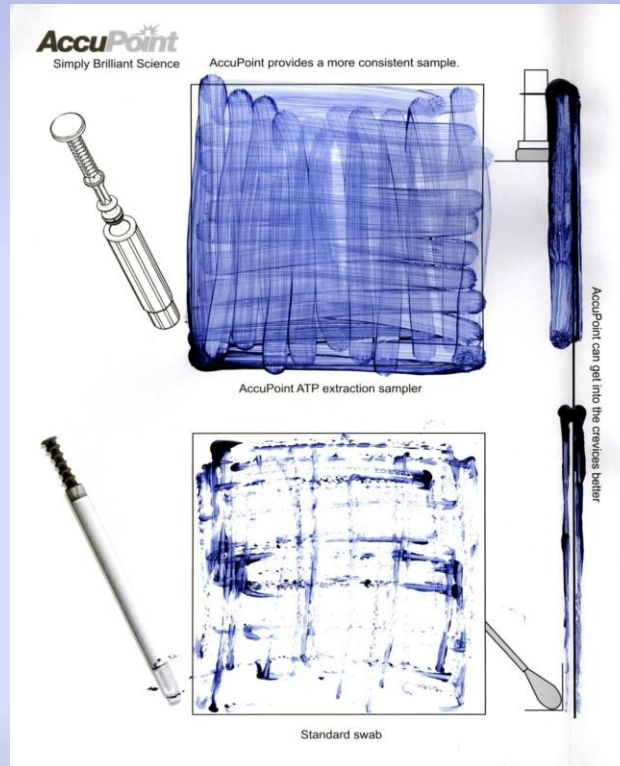
- Bioluminescence is a chemical reaction that produces light.
- ATP bioluminescence occurs when ATP from a sample comes into contact with luciferase, an enzyme found in fireflies.
- The amount of light emitted in this reaction is proportional to the amount of ATP detected in the sample and presented in Relative Light Units (RLU's).



The AccuPoint System was chosen to measure ATP in your facility.

Here's why:

Easy to use. Provides consistent results. Proactive.



Preventing Cross Contamination

• Common areas of cross contamination:

- ❖ Shared lab space and cage wash areas.
- *Biosafety Hoods, cage changing counter tops.*
- *Instruments, forceps or scalpels.*
- *Caging, metal feeders, sipper tubes.*
- *PPE changing station, floor, door knobs.*

How can you be sure your area was cleaned after its last use?

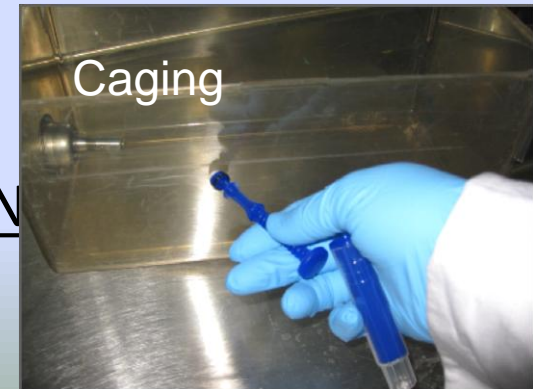
Answer: Quick Swab

• Inadequate or outdated S.O.P.s.

- ❖ Difficult to supervise and ensure SOPs are followed properly.
- PPE compliance or contact time for disinfectants.*

How can you be sure SOP's are being followed?

Answer: Change it up with a new S.O.P TEST PLAN



An ATP detection system provides an objective, measurable and immediate way to determine the level of hygiene and cleanliness in your facility.



The Role of ATP Sanitation Monitoring

- ✓ The standard for determining cleaning effectiveness on hard surfaces.
- ✓ Provides direct evidence of biological material or “bio-load.”
- ✓ Can be used for monitoring and verification of Good Laboratory Practices (GLP) and adherence to Standard Operating Procedures (SOP).
- ✓ Enables the collection and storage of data on cleaning effectiveness for documentation and review.
- ✓ Gives immediate results to ensure that cage wash and general sanitation is working...before its too late.
- ✓ **BE PROACTIVE.**

